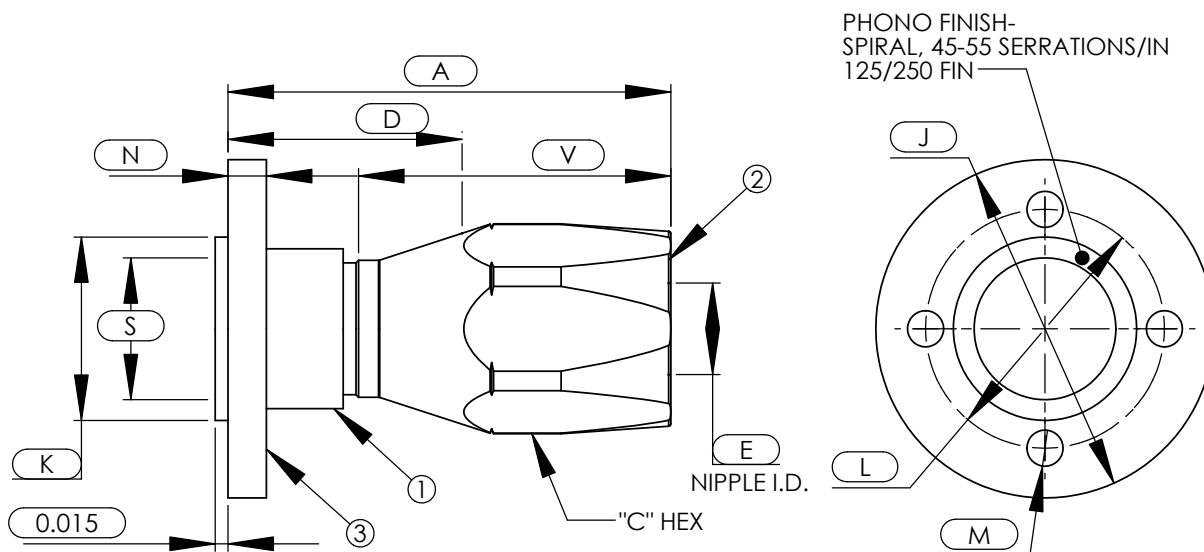


CMC™ Hose End Fittings

MIL-F-20042 150lb Type IV Flange Connection

For SAE 100R5 Hose

CMC-5101



ASSY PART NUMBER	IPS SIZE	NO. OF BOLTS	A	C NOM	D	E	J	K	L	M	N	S	V
CMC-XXX-5101-1/2-16	1/2	3	2.80	1.44	1.53	0.82	3.56	1.50	2.44	.56	.38	0.62	1.66
CMC-XXX-5101-3/4-20	3/4	4	2.89	1.75	1.53	1.05	3.81	1.84	2.69	.56	.44	0.82	1.75
CMC-XXX-5101-1-24	1	4	2.92	1.94	1.47	1.28	4.25	2.12	3.12	.56	.44	1.05	1.84
CMC-XXX-5101-1 1/4-32	1 1/4	4	3.51	2.50	1.66	1.69	4.50	2.74	3.38	.56	.44	1.38	2.25
CMC-XXX-5101-1 1/2-32	1 1/2	6	3.51	2.50	1.66	1.69	5.06	2.74	3.94	.56	.44	1.61	2.25
CMC-XXX-5101-2-32	2	6	3.51	2.50	1.66	1.69	5.56	2.74	4.44	.56	.44	1.77	2.25
CMC-XXX-5101-2-40	2	6	3.89	3.25	1.98	2.21	5.56	3.28	4.44	.56	.44	2.06	2.50
CMC-XXX-5101-2 1/2-40	2 1/2	6	3.89	3.25	1.98	2.21	6.12	3.28	5.00	.56	.50	2.06	2.50
CMC-XXX-5101-2 1/2-48	2 1/2	6	3.89	3.88	1.98	2.83	6.12	3.78	5.00	.56	.50	2.47	2.50
CMC-XXX-5101-3-48	3	8	3.89	3.88	1.98	2.83	6.62	4.50	5.50	.56	.50	3.07	2.50

B.O.M.

COMPONENT PART NUMBERS

- ① ALL SIZES.....NI-5101-(NPS SIZE)-(HOSE SIZE)-(MATL CODE)
- ② ALL SIZES.....SO-5001-(SIZE)-(MATL CODE)
- ③ ALL SIZES.....FL-(NPS SIZE)-(HOSE SIZE)-(TYPE)-(MATL CODE)

-EXAMPLE-

CMC-XXX-5101-1/2-16

SEE PAGE 2 FOR ASSY MATERIAL DESIGNATIONS.