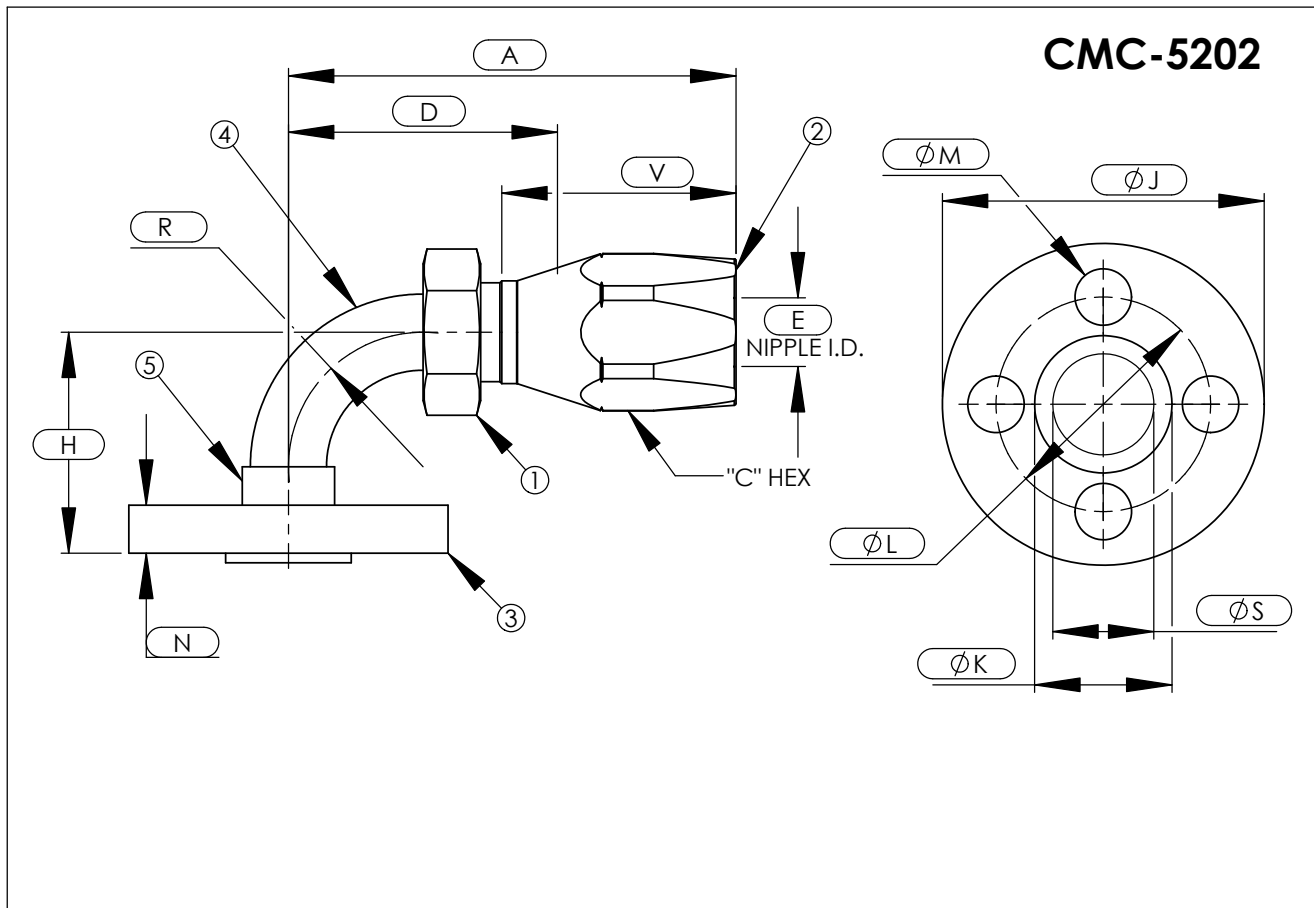


QPL-24787-12 CMC™ Hose End Fittings

**MIL-F-20042 250# Type III
Flange Connection**

For MIL-H-24135/1 Type EL, MIL-F-24787/1 Group I, Type FL



ASSY PART NUMBER	IPS SIZE	NO. BOLT HOLES	A	C	D	E	F	H	J	K	L	M	N	R	S	V
CMC-XXX-5202-1/2-12	1/2	3	4.52	1.50	2.65	0.61	0.75	2.19	3.56	1.50	2.44	0.56	0.69	1.25	0.71	2.47
CMC-XXX-5202-3/4-16	3/4	4	5.25	1.75	3.20	0.82	1.00	2.49	3.81	1.84	2.69	0.56	0.69	1.50	0.92	2.95
CMC-XXX-5202-1-20	1	4	6.10	2.25	3.78	1.05	1.25	2.69	4.25	2.12	3.12	0.56	0.75	1.75	1.18	3.42
CMC-XXX-5202-1 1/4-24	1 1/4	4	6.32	2.50	4.09	1.28	1.50	3.13	4.50	2.74	3.38	0.56	0.81	2.00	1.53	3.34
CMC-XXX-5202-1 1/2-32	1 1/2	6	7.38	3.00	4.94	1.75	2.00	3.35	5.06	2.74	3.94	0.56	0.81	2.50	1.77	3.70
CMC-XXX-5202-2-32	2	6	7.38	3.00	4.94	1.75	2.00	3.35	5.56	3.28	4.44	0.56	0.81	2.50	1.77	3.70

- B.O.M. COMPONENT PART NUMBERS
- ① ALL SIZES-..... NI-5202-(IPS SIZE)-(MATL CODE)
 - ② ALL SIZES-..... SO-5002-(SIZE)-(MATL CODE)
 - ③ ALL SIZES-..... FL-(IPS SIZE)-(HOSE SIZE)-(MATL CODE)
 - ④ MONEL- SIZE 12 ONLY.....TUBE
 - ④ COPPER NICKEL-SIZES 16THRU 32.....TUBE
 - ⑤ ALL SIZES-.....FL FITTING

-EXAMPLE-
CMC-XXX-5202-1/2-12

SEE PAGE 2 FOR ASSY MATERIAL DESIGNATIONS.