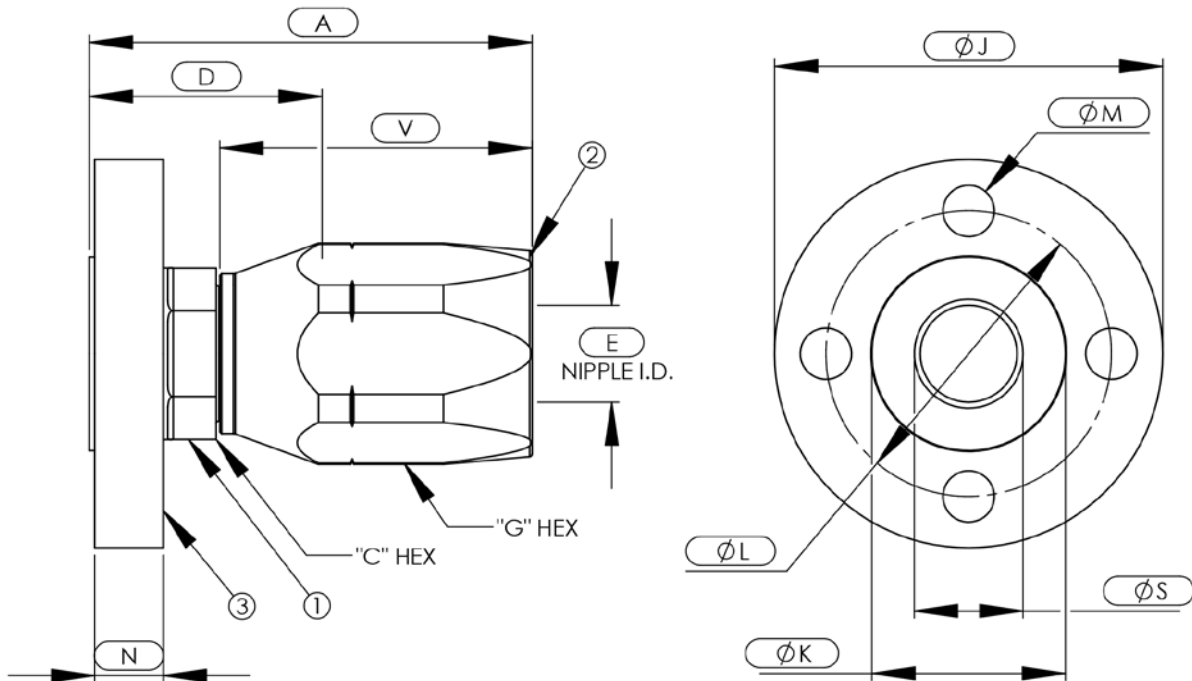


# CMC® Hose End Fittings

For MIL-H-24135/1 Type E  
 MIL-F-24787/1 Group I, Type F  
 MIL-F-20042 250# Class III Flange Connection

QPL-24787-12

## CMC-5102



ASSY PART NUMBER	IPS SIZE	NO. BOLT HOLES	A	C	D	E	G	J	K	L	M	N	S	V
CMC-XXX-5102-1/2-12	1/2	3	3.92	1.12	2.05	0.61	1.50	3.56	1.50	2.44	0.56	0.69	0.71	2.47
CMC-XXX-5102-3/4-16	3/4	4	4.34	1.38	2.29	0.82	1.75	3.81	1.84	2.69	0.56	0.69	0.92	2.95
CMC-XXX-5102-1-20	1	4	4.81	1.62	2.49	1.05	2.25	4.25	2.12	3.12	0.56	0.75	1.18	3.42
CMC-XXX-5102-1-1/4-24	1-1/4	4	4.97	2.12	2.73	1.28	2.50	4.50	2.74	3.38	0.56	0.81	1.53	3.34
CMC-XXX-5102-1-1/2-32	1-1/2	6	5.33	2.25	2.87	1.75	3.00	5.06	2.74	3.94	0.56	0.81	1.77	3.70
CMC-XXX-5102-2-32	2	6	5.33	2.69	2.89	1.75	3.00	5.56	3.28	4.44	0.56	0.81	2.24	3.70

B.O.M.

COMPONENT PART NUMBERS

- ① ALL SIZES-.....NI-5102-(IPS SIZE)-(HOSE SIZE)-(MATERIAL CODE)
- ② ALL SIZES-.....SO-5002-(SIZE)-(MATERIAL CODE)
- ③ ALL SIZES-.....FL-(IPS SIZE)-(HOSE SIZE)-(TYPE)-(MATERIAL CODE)

-EXAMPLE-

CMC-XXX-5102-1/2-12

└─ SEE PAGE 2 FOR ASSY MATERIAL DESIGNATIONS