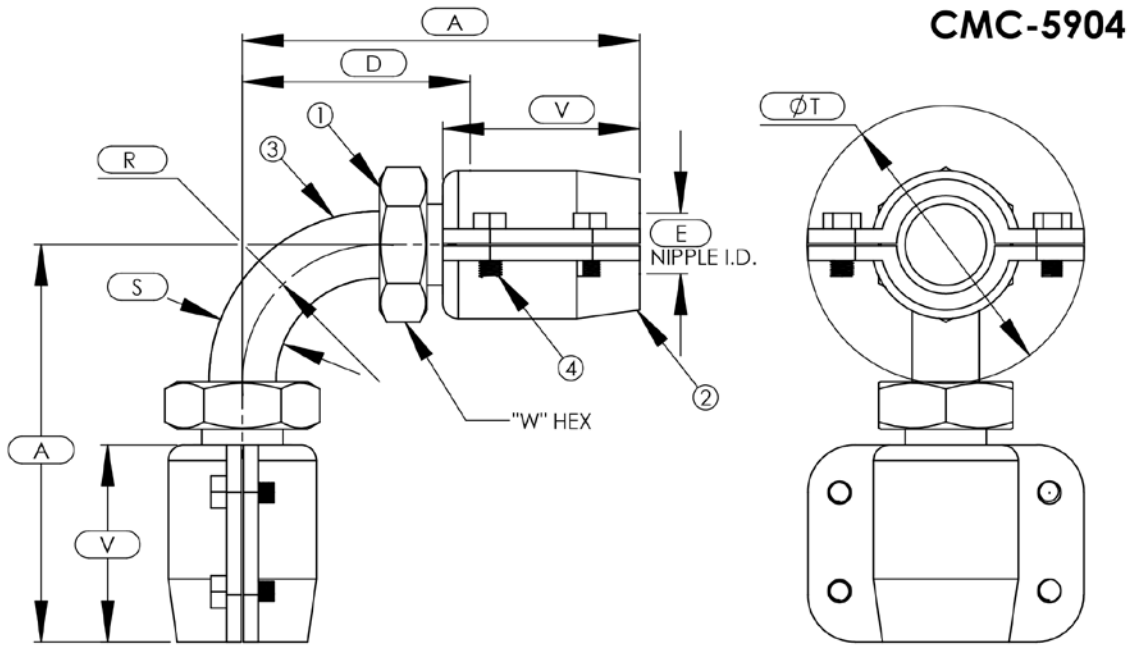


CMC® Hose End Fittings

90° Dogleg

For MIL-H-24136/2 Type E
MIL-F-24787/5 Group XI, Type D

QPL-24787-12



| ASSY PART NUMBER | HOSE I.D. | A | D | E | R | S | T | V | W |
|-------------------|-----------|------|------|------|------|------|------|------|------|
| CMC-XX-5904-06-06 | 3/8* | 3.20 | 1.58 | 0.26 | 0.50 | 0.38 | 2.34 | 2.00 | 0.94 |
| CMC-XX-5904-08-08 | 1/2* | 3.56 | 1.84 | 0.39 | 0.75 | 0.50 | 2.66 | 2.10 | 1.00 |
| CMC-XX-5904-12-12 | 3/4* | 4.51 | 2.61 | 0.61 | 1.25 | 0.75 | 3.27 | 2.42 | 1.31 |
| CMC-XX-5904-16-16 | 1 | 4.76 | 2.85 | 0.82 | 1.50 | 1.00 | 4.02 | 2.42 | 1.62 |
| CMC-XX-5904-20-20 | 1-1/4 | 5.50 | 3.40 | 1.05 | 1.75 | 1.25 | 4.31 | 2.80 | 2.00 |
| CMC-XX-5904-24-24 | 1-1/2 | 5.96 | 3.66 | 1.30 | 2.00 | 1.50 | 4.69 | 3.01 | 2.25 |
| CMC-XX-5904-32-32 | 2 | 7.60 | 4.52 | 1.75 | 2.50 | 2.00 | 5.65 | 3.88 | 2.75 |

B.O.M.

COMPONENT PART NUMBERS

- ① ALL SIZES-.....NI-5900-(TUBE SIZE)-(HOSE SIZE)-(MATL CODE)
- ② ALL SIZES-.....CL-10-(HOSE SIZE)-(MATL CODE)
- ③ MONEL- SIZES 6 THRU 12.....TUBE
- ③ COPPER NICKEL- SIZES 16 THRU 32....TUBE
- ④ K-MONEL- ALL SIZES.....BT-(SIZE)-(LENGTH)-(MATL CODE)

-EXAMPLE-

CMC-XXX-5904-06-06

└ SEE PAGE 2 FOR ASSY MATERIAL DESIGNATIONS

*REQUIRES
2 BOLTS ONLY
PER SOCKET
ASSY.